



Bouverie Place Shopping Centre, Folkestone GMW Architects.



Universo Servizi, Milan AMA Albera Monti & Associati.



Tigné Point, Malta The island's first modern shopping mall with retail layout and interior design by GMW Architects.



The Turkish Chancellery Building, Berlin A design competition entry for exhibition space, conference and reception halls.



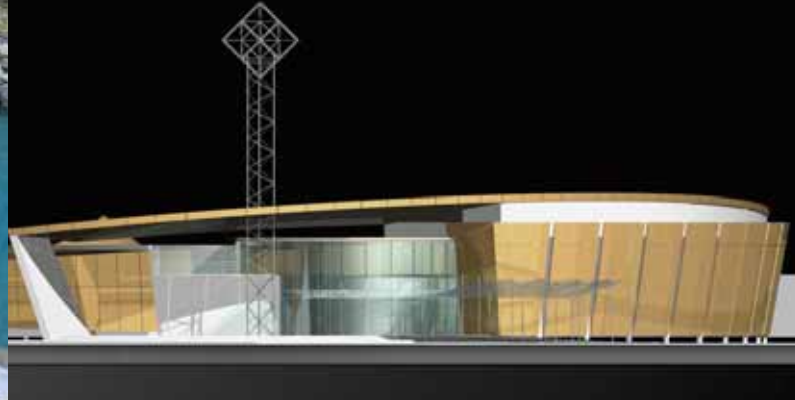
Galerie der Gegenwart, Saarbrücken, Germany Expansion of the existing museum. Competition 2007, Special Prize.



Atlantis, Brussels A 30,000m<sup>2</sup> office development currently under construction. (In association)



'Xiroliitha' Summer House A hidden, courtyard house with a single stone façade topped by a white block. Inspired by the stone walls of the Greek Islands.



Newag Commercial Centre, Nowy Sacz A 42,000 m<sup>2</sup> retail centre with a cinema and public spaces.

## The EAA – a European focus



- Limerick
- Cork
- Dublin
- London
- Brussels
- Paris
- Aachen
- Madrid
- Milan
- Genova
- Rome
- Palermo
- Copenhagen
- Berlin
- Krakow
- Bratislava
- Zagreb
- Warsaw
- Moscow
- Istanbul
- Athens

The European Architects' Alliance is a consortium of architectural and design firms founded on the principle of mutually beneficial co-operation. With more than 20 offices across Europe and 650+ staff, the Alliance brings international experience and local knowledge to projects across a wide range of sectors.

EAA members have been collaborating on a variety of projects for international clients and currently have commissions for Disney, Discovery Channel, JPMorgan Chase and Vodafone, to name a few.

Understanding the client, sharing knowledge and concurrent design are our priorities, with best-value targets and continuous improvement as the motors to increase product value. Non-adversarial contracts form the basis for success.

The EAA is ideally placed to provide architectural and design services for clients whose requirements transcend national boundaries and offers particular advantages to multi-national firms pursuing global roll-out development programmes.

## GMW Architects

United Kingdom



### BAT, Globe House, London

An innovative fit out for BAT's European Business Group that integrates senior managers more effectively with their teams. It moves executives out of enclosed cellular offices into the open-plan space to generate a more dynamic working environment.



### Office Park at Piraeus, Athens

A new development for clients Bluehouse and J&P Developments. The design creates a sustainable office community around a lively internal plaza. The modular layout allows flexible office planning and the design addresses the local seismic conditions, climate and context.



## GMW Mimarlik

Turkey



**Deutsche Bank, Istanbul** Within eighteen months of moving Deutsche Bank into Tekfen Tower, GMW were re-appointed to design the fit out of an additional 1,500m<sup>2</sup>. The restricted daylight and views of the new space have led to a design with light and bright finishes, while partitions are predominantly glazed. The main corridors feature multi-coloured glass ceilings and provide a focus for the space.

### Branch Bank Istanbul

The street branch in Macka is a prototype for all future branches of an international bank launching into the Turkish market. The design provides a high quality retail environment with a distinct identity.



### Vodafone Headquarters, Istanbul

A collaboration between GMW Mimarlik and GMW Architects saw this fit-out completed in eight months, including design and construction. The 26,300m<sup>2</sup> building provides offices for 1,000 staff, informal and formal meeting rooms, a retail unit, training rooms, cafeteria and gymnasium facilities.



## Collignon Architektur

Germany



**Office Building, Vogelsanger Weg 80, Düsseldorf** Technical and architectural refurbishment, completion 2007. New access and representative lobby with cantilevered canopy.

### Choriner Höfe, Berlin

A commission for two residential buildings with 35 high-quality apartments, underground car park of 100 spaces, and general co-ordination for a total of 120 apartments. Completion 2009.



**Multi-Use-Development by the Spree River, Berlin** A study carried out in 2007 for the development of a 'creative city' on an inner city site.



## CERAU

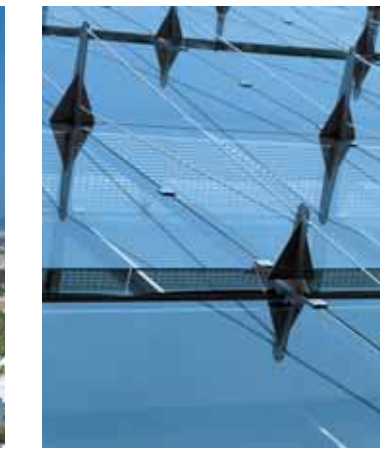
Belgium



**Zenith Tower, Brussels** A 30,000 m<sup>2</sup> office building currently under construction. View of the entrance hall. (In association)



**Casablanca Anfa, Morocco** Urban planning competition for an area of 400 hectares in the heart of the city.



**European Parliament Building Extension, Brussels** View of the ventilated facade. (In association)



**Oran, Algeria** Hospital competition. (In association)

## klmf architects

Greece



### Zic-zac air(th) house

A house of two separate concepts. A base form in exposed concrete with a zic-zac of playful cubes following the topography of the site and a floating rectangular metallic structure above. Circulation becomes the structural and functional connection.



### Mersey Observatory competition entry

A dynamic observatory for the Mersey River area and a landmark for the region. Its form suggests a bird ready to fly or perhaps a boat.

**Maiandros House 1** A complex of five houses designed to create an intriguing 'villa' atmosphere.



## IMB Asymetria Architects

Poland



**Pawia Offices, Krakow** 20,000 m<sup>2</sup> of Class A office development located next to the main railway station, close to the historic Old Town.



### Odra Tower Wrocław

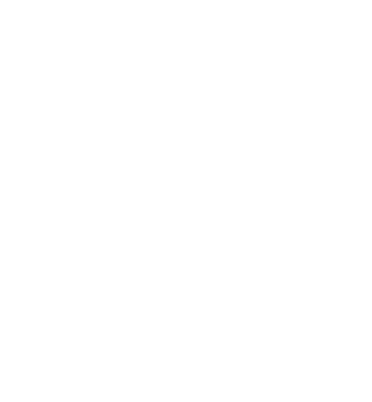
A high-rise development on the Odra riverside in the city centre of Wrocław. The scheme combines a 36-storey tower of luxury apartments with a low-rise podium. The podium provides retail/restaurant and offices, with apartments to the rear facing the river.



**Cracovia Football Stadium** A new football stadium in Krakow. Competition scheme – III prize.



UCD Health Sciences Complex Murray O Laoire Architects



**AMA Albera Monti & Associati Milano, Roma, Genova & Palermo** Italy. www.alberamonti.it  
Tel: +39 02 8699 6670-6574 e-mail: n.monti@alberamonti.it  
Contact: Nicolas Monti

**CERAU s.p.a. Brussels** Belgium. www.cerau.com  
Tel: +32 2 673 60 72 e-mail: bgerard@cerau.be  
Contact: Bruno Gerard

**Collignon Architektur Berlin** Germany.  
www.collignonarchitektur.com Tel: +49 30 31 51 81-0  
e-mail: mail@collignonarchitektur.com Contact: Oliver Collignon

**DesignGroup Architects Copenhagen** Denmark www.dga.dk  
Tel: +45 33 91 84 85 e-mail: info@dga.dk  
Contacts: Lars Hermansen, Christian Giese, Morten Ulf Jørgensen

**FM Arquitectos Madrid** Spain. www.fmarquitectos.com  
Tel: +34 91 577 0664 e-mail: james.drummond@cbre.com  
Contact: James Drummond

**GMW Architects London** UK www.gmw-architects.com  
Tel: +44 20 7937 8020 e-mail: info@gmw-architects.com  
Contact: Lyn Edwards

**GMW Mimarlik ve Danismanlik Ltd Istanbul** Turkey.  
www.gmw.com.tr Tel: +90 212 327 1940  
e-mail: gmw@gmw.com.tr Contact: Ali Özveren

**IA Interior Architects London** U.K. www.interiorarchitects.com  
Tel: +44 20 7361 5622 e-mail: b.rutkowski@interiorarchitects.com  
Contact: Bill Rutkowski

**IMB Asymetria Architects Kraków** Poland.  
www.imbasymetria.pl Tel: +48 12 398 49 00  
e-mail: biuro@imbasymetria.pl Contact: Marek Borkowski

**klmf architects Athens** Greece. www.klmf.gr  
Tel: +30 210 321 1139 e-mail: info@klmf.gr  
Contact: Konstantinos Labrinopoulos

**Murray Ó Laoire Architects Dublin, Limerick & Cork** Ireland.  
www.murrayolaoire.com Tel: +353 1 453 7300  
e-mail: calbhac.ocarroll@murrayolaoire.com  
Contact: Calbhac O'Carroll

**Murray Ó Laoire Architects Moscow** Russia.  
www.murrayolaoire.com Tel: +7 495 937 3757 e-mail:  
calbhac.ocarroll@murrayolaoire.com Contact: Calbhac O'Carroll

**Murray Ó Laoire Architects Bratislava** Slovakia.  
www.murrayolaoire.com Tel: +421 2 5737 3999  
e-mail: jennifer.boyer@murrayolaoire.com Contact: Jennifer Boyer

**Murray Ó Laoire Architects Aachen** Germany.  
www.murrayolaoire.com Tel: +49 241 608 320-0  
e-mail: kevin.jackson@murrayolaoire.com Contact: Kevin Jackson

**SERAU architectes et ingénieurs associés Paris** France.  
www.serau.com Tel: +331 4278 1233 e-mail: ftomat@serau.com  
Contact: Frédéric Tomat

**Tomislav Cop Architects Zagreb** Croatia.  
Tel: +385 98 1946 578 e-mail: tomislavcop@tomislavcop.com  
Contact: Tomislav Cop

**Cromcastle, Dublin** A phased development incorporating retail and offices, plus a medical centre, 1,403 mixed residential units, civic and cultural facilities.

## Murray Ó Laoire Architects

Ireland Russia Slovakia Germany



**UCD Health Sciences Complex, Dublin** Master plan and phased development of new state-of-the-art teaching facilities and clinical skills labs designed to simulate a real hospital working environment.

**Broadstone Hall, Dublin** Innovatively clad city-centre accommodation for 96 students on four levels. Set on a steeply-sloping landscaped site, the building connects an upper level park to the lower level street.



**International Congress Centre Rostov-On-Don** The scheme accommodates a 23-storey four star hotel, an 800 seat congress hall, business centre, elite retail centre and incorporates underground and surface parking.

**Cork School of Music, Cork** The first educational PPP development undertaken by the Irish Government, the Cork School of Music provides specialist facilities in a world-class environment for music and performance education.



**Bois d'Arcy** 26,000m<sup>2</sup> industrial building for La Poste in south west Paris. The timber boarding façade responds to the nearby environment.

## SERAU architectes et ingénieurs associés

France



**L'Oréal research centre, Saint Ouen** This centre will relocate L'Oréal's activities in the north of Paris. The design of the 26,000m<sup>2</sup> of offices and laboratories is in keeping with the urban context and, thanks to the client's close involvement, we have developed a highly energy-efficient building.



**IOTA, Saclay** The French Advanced Optics Research Centre opened in September 2007. This new 20,000m<sup>2</sup> facility, constructed in the heart of the European Scientipole, includes an engineering school and a research laboratory department.



**Computer Associates** New accommodation for Computer Associates. Completed in 2007.

## DesignGroup Architects

Denmark



**Falkoner Plads, Copenhagen** A mixed-use development consisting of student accommodation, cinema and retail. Completed in 2007.

**Multi-storey car park, South Harbour, Copenhagen** Completed in 2007 for Zeta Park.



**Amazon.com Headquarters, Seattle** Master planned a sustainable environment for this 500,000ft<sup>2</sup> facility, with a 70,000ft<sup>2</sup> first phase now in place.

## IA Interior Architects

United Kingdom United States



**Wachovia, California** After completing the London headquarters, work continues in the U.S. This new 23,000ft<sup>2</sup> administrative office and conference center in Irvine, California, will serve as a prototype and guide for Wachovia facilities throughout the region.



**Faraday, London** As a wholly-owned subsidiary of General Reinsurance (Gen Re), Faraday operates independently in the U.K. IA's restack of the London Gen Re facility enhances overall efficiency and creates a branded Faraday floor to emphasize the firm's distinct European identity.

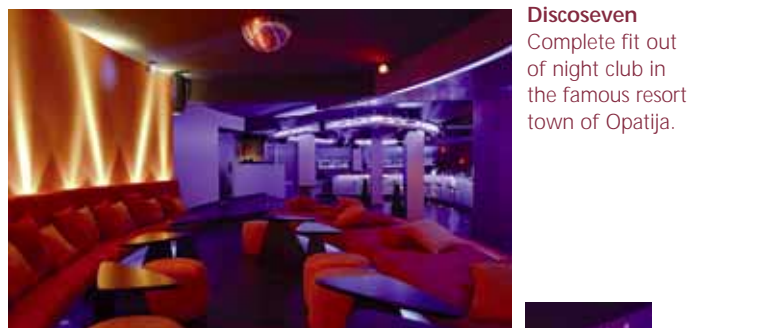
**Hotel Adriatic, Biograd** Swimming pool completed in 2006.

## Tomislav Cop Architects

Croatia



**Hotel Adriatic, Biograd** This project involved the refurbishment of the hotel to 3 stars. The hotel comprises 105 guestrooms, a main restaurant, bar, outdoor bar and terrace together with a swimming pool. The inspiration for the hotel is lavender, the dominant native plant found on this part of the Croatian coast.



**Private residence, Madrid**

## FM Arquitectos

Spain



**Polaris World, Murcia, Spain** InterContinental Mar Menor Golf Resort.



**Polaris World, Murcia, Spain** Restaurant Ginkgo.



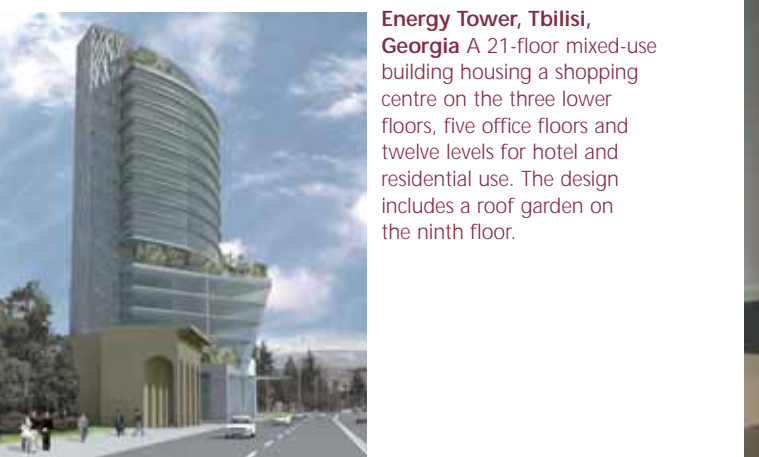
**Universo Servizi, Corporate Headquarters, Milan** 9,000m<sup>2</sup> offices in light and natural materials designed to encourage connectivity and communication.

## AMA Albera Monti & Associati

Italy



**Christianity Museum, Sighnaghi, Georgia** Forms and materials are inspired by traditional Georgian architecture, yet the design is fully contemporary. The building is designed for low maintenance and to age well.



**Loft, Milan** This mixed-use space in the heart of an historical Milanese neighbourhood, is the result of the complete refurbishment of a former industrial space, now transformed into flexible accommodation for exhibitions, installations, fashion and gala events, and temporary showrooms.



**Vodafone Headquarters, Istanbul**  
GMW Mimarlik ve Danismanlik Ltd &  
GMW Architects