



## CERAU

### D4-D5 - LAST PHASE OF THE EUROPEAN PARLIAMENT IN BRUSSELS

This 77,000 sq.m. on 13 levels development is due to be delivered in 2007. Comprising of offices, large conference rooms with 27 cabins for simultaneous translation, radio and tv studios, social and cultural space and a railway station entrance the project features a spectacular footbridge at 11 meters over the rail which cover the railways, will liaise between all the buildings of the European Parliament.



### ROYAL MUSEUM OF FINE ARTS OF BELGIUM

Renovation of exhibition halls, library, work shops, administrative zone, archives, art shop, etc... Several "art déco" and "néo-classique" areas.



### WATERLOO ATRIUM WATERLOO / BELGIQUE

Office development due to be completed in January 2004. Contemporary image with a high level of comfort and maximum flexibility, the inclusion of the atrium allows all offices to benefit from natural Daylight.

## DESIGN GROUP

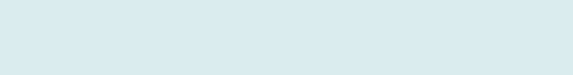
### RECEPTION FOR HUR (GREATER COPENHAGEN AUTHORITY)

This development comprising of entrance, façade and reception area features an exhibition area, information stands, multimedia display and meeting points. The overall impression is a welcoming lightness and transparency, glass has been involved in many ways: walls, furniture and screens. A wooden reception counter balances the hardness of the glass.



### FIRE STATION IN TOENDER

Completed in 2003 this new €1.1million project included demolition of old station and building new fire station plus addition to existing garage. The new station is constructed from insulated precast concrete elements combined with light glass facades to comply with demand for short construction period.



## GMW ARCHITECTS



### CHARTERED INSTITUTE OF PERSONNEL & DEVELOPMENT

This five-storey, 5,500 sq.m (60,000 sq.ft) headquarters provides flexible office space, a library, staff restaurant and conference suite in an environmentally and user friendly building. The upwardly curving all-glass principal elevation introduces design themes of lightness and transparency and the U-shaped floor plates wrap around a semi-circular atrium to promote a sense of community.



### TEMPLE HOUSE

Mixed-use development of some 5,300 sq.m. consisting of 52 one and two bedroom apartments above three levels of retail. The design aims for a contemporary expression with modular terracotta rain screen panels to the residential levels and a transparent, predominantly glazed curtain wall to the retail element. A post-tensioned concrete frame will allow rapid construction of a very efficient structure.



### ILFORD TOWN CENTRE

The development, on a 2.6 hectare site immediately south of the High Road and the Town Hall, is centred around a new world class town square that will provide a dynamic urban environment. The development comprises of 488 residential apartments including affordable housing and lifetime homes, arranged around communal gardens; 11,000m2 of retail and leisure amenities; a new entrance wing to the Town Hall, which resolves its current circulation and access problems; 1500m2 of community and civic facilities and 300 car parking spaces.



### PIER 6

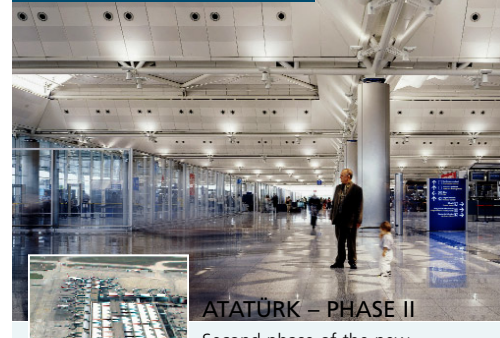
Pier 6 is a new remote pier at London Gatwick Airport. It will provide 12 aircraft stands and will connect to Gatwick's North Terminal via a high-level bridge. The 200 metre long bridge link is the first of its kind and will stand 22 metres above the apron to allow aircraft up to the size of a Boeing 747 taxi beneath it.



### MACKA HOTEL

GMW is design team leader for Hotel Macka, a new 14,000 sq.m. luxury hotel in Istanbul. The eight-storey building will have 145 five-star guest rooms, with a banqueting & conference suite, a range of meeting rooms, a purpose built business centre, a large beauty & fitness area. The hotel will have six restaurants and the full range of facilities will be of the highest quality, positioning Hotel Macka as one of the finest hotels in the region.

## GMW MIMARLIK

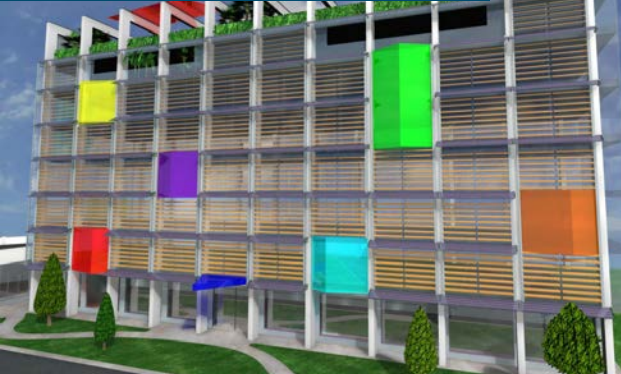


### ATATURK - PHASE II

Second phase of the new International Terminal at Istanbul Ataturk Airport. The project extends the GMW-designed first phase and confirms the fundamental design strategy, which easily facilitated the extension of the terminal with minimal disruption to existing operations. The initial phase of the project comprised a 190,000 sq.m. terminal building and an adjoining 180,000 sq.m. multi-storey car park, construction of which was completed in just 22 months. The completion of the second phase of construction will bring the value of the whole project to in excess of \$400 million.

## IMB ASYMETRIA ARCHITECTS

## ALBERA MONTI & ASSOCIATI



### HELVETIA INSURANCE COMPANY HEADQUARTERS

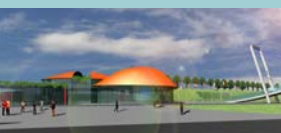
The design of the headquarters of the Helvetia Insurance Company in Milan includes a brise-soleil facade with the protruding coloured volumes of meeting rooms and common spaces, and a green roof.

### LAWYER'S OFFICE

New lobby for a lawyers' office building designed to create a transition space monumental yet rich of light and transparencies.

### MULTI-FUNCTIONAL SPORTS FACILITY, TURIN

A new multifunctional sports facilities near Turin for auto and moto fans, accommodating up to 15,000 spectators, including three racing tracks, a fitness/wellness and a commercial centre.

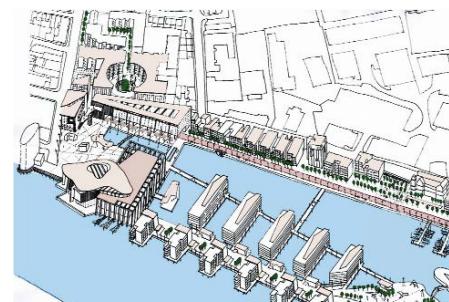


## MURRAY Ó LAOIRE ARCHITECTS DUBLIN



### PRIBINOVA RIVERFRONT, SLOVAKIA

Proposed mixed-use development in Bratislava with 30,000 sq.m. of retail. The centrepiece will be a 'Galleria' offering a naturally ventilated but climate controlled environment all year round.



### RE-INVENTING LIMERICK DOCKLANDS

With a team of economists, engineers, transport specialists and planners an approach to a strategic development plan for the Docklands area of Limerick City was developed to ensure a phased and regulated expansion approach.

## MOSCOW



### KALININGRAD RETAIL CENTRE

30,000 sq.m. retail and offices development with two levels of parking, several cinemas, a 3,000 sq.m. supermarket, and a food court in the central atrium.

### DREAM HOUSE, MOSCOW

Dream House comprises of a 12,800 sq.m. retail centre over 4 levels around a triangular glazed atrium. Currently under construction.



## SERAU ARCHITECTES ET INGÉNIEURS ASSOCIÉS



### SHOPPING CENTRE WITH INDOOR SKI RUN

The project features 30,000 sq.m of sport themed retail and restaurants split in two levels around an atrium, 6,200 sq.m of leisure (bowling, fitness, etc) and 12,500 sq.m of indoor skiing facility (90,000 sq.m gross area).



### FUNDAMENTAL RESEARCH CENTRE

Thales new, 36,000sq.m. Fundamental Research Centre features a number of laboratories of all disciplines, among which 1,500sq.m of clean rooms, a central building dedicated to communication with its modular meeting rooms and a 120 seat auditorium. A 330 spaces car park is set underground. The Centre buildings, long and low, create the street lines, marked on the south side by a long wooden claustra. On the inside, more complexity and opening create a sense of intimate scale appropriate to the Centre scientists community well being.