



Vopak, Rotterdam Hollandse Nieuwe

RSA Headquarters, London GMW Architects



Saudi Civil Aviation Holding Company, Riyadh. GMW Architects has designed the new HQ for the General Authority for Civil Aviation in KSA.



Prince Mohammed Bin Abdulaziz International Airport, Medina Progress on site.



Soras Towers, Kigali, Rwanda Mixed-used building under construction.



Berliner Rugby Club Stadium 25,800m² gross floor area, 1,340m² building area. Completion 2016.



Avolon Phase 2 Within 3 years of completing Phase 1, MOLA were asked to address a doubling of Avolon's staff numbers in Phase 2.

www.eaa.eu.com

The EAA – a European focus

Dublin
London
Amsterdam
Brussels
Paris
Zurich
Milan
Genova
Rome
Palermo
Copenhagen
Berlin
Krakow
Warsaw
Helsinki
St Petersburg
Istanbul



The European Architects' Alliance is a consortium of architectural and design firms founded on the principle of mutually beneficial co-operation. With 16 offices across Europe and 500+ staff, the Alliance brings international experience and local knowledge to projects across a wide range of sectors.

EAA members have been collaborating on a variety of projects for international clients and currently have commissions for Citigroup, KPMG and Ace European Group to name a few.

Understanding the client, sharing knowledge and concurrent design are our priorities, with best-value targets and continuous improvement as the motors to increase product value. We advocate non-adversarial contracts as the basis for success.

The EAA is ideally placed to provide architectural and design services for clients whose requirements transcend national boundaries and offers particular advantages to multi-national firms pursuing global roll-out development programmes.

GMW Architects United Kingdom & Qatar



67 Lombard Street, London provides high quality modern offices for the financial services sector. The building was completed in the summer of 2014 for Viridis Real Estate Services and has ten levels of office space

5-6 St. James's Square, London Completed in 2014, this redevelopment provides commercial offices, residential units and a small art gallery. No. 5, a Listed building, has been refurbished, while the remainder of the project is contemporary new build.



Hurtwood Park An outline planning application has been submitted for proposals to upgrade and redevelop Hurtwood Park Polo and Country Club to become an equestrian estate at the highest level.



GMW Mimarlik Turkey



Terminal 5, King Khaled International Airport, Riyadh Departures level check-in hall.



Odeabank Headquarters, Istanbul Fit-out project.

Eurasia Tunnel Project, Istanbul Two deck road tunnel.



O&M building.



Ventilation building.



CERAU Belgium



New sustainable district, Tivoli, Brussels (in association – Adriana a.m.) Project winner for Citydev. Brussels. 400 apartments, 2 nurseries, commercial spaces and public park.



Collignon Architektur Germany



Multi-functional building, Berlin Hotel, apartments and underground parking lots, 16,250m² gross floor area. Completion 2016.



Park House, Berlin Urban living apartments and parking, 10,869m², 139 apartments, 98 parking lots. Competition design 2014.



MOLA Architecture Ireland



Athlone Town Centre, Residential Quarter

The residential component of this 108,000m² mixed use urban regeneration project incorporates 155 units in a mix of town houses, duplexes and apartments on a 2.9 ha site adjacent to the town's historical quarter. MOLA Architecture have been engaged in adding to and reconfiguring the residential quarter in 2014 to meet new landlord and tenant demands in an evolving, post-recessionary, residential market.



"The Diving Bell", Dublin Port Company A project to re-present "The Diving Bell", a familiar dockside remnant of 19th Century industrial archaeology, as a significant "player" in the creation of Dublin's Port. The project aims to engage with the wider public, communicating the story of the bell through interpretative material and displays.



AMA Albera Monti & Associati Milano, Roma, Genova & Palermo Italy & Zurich Switzerland. www.alberamonti.it Tel: +39 02 8699 6574 e-mail: n.monti@alberamonti.it Contact: Nicolas Monti

CERAU s.p.a. Brussels Belgium. www.cerau.com Tel: +32 2 673 60 72 e-mail: bgerard@cerau.be Contact: Bruno Gerard

Collignon Architektur Berlin Germany. www.collignonarchitektur.com Tel: +49 30 31 51 81-0 e-mail: mail@collignonarchitektur.com Contact: Oliver Collignon

DesignGroup Architects Copenhagen Denmark. www.dga.dk Tel: +45 33 91 84 85 e-mail: info@dga.dk Contact: Christian Giese, Morten Ulf Jørgensen

GI Design and Architecture Helsinki & St Petersburg Finland. www.gullsten-inkinen.com Tel: +358 9 774 2640 e-mail: jari.inkinen@gullsten-inkinen.com Contact: Jari Inkinen

GMW Architects London UK & Doha Qatar. www.gmw-architects.com Tel: +44 20 7937 8020 e-mail: info@gmw-architects.com Contact: Lyn Edwards

GMW Mimarlik ve Danışmanlık Ltd Istanbul Turkey. www.gmw.com.tr Tel: +90 212 327 1940 e-mail: gmw@gmw.com.tr Contact: Ali Özveren

Hollandse Nieuwe Amsterdam Netherlands. www.hollandse-nieuwe.com Tel: +31 20 6364950 e-mail: hans@hollandse-nieuwe.com Contact: Hans Reineke

IMB Asymetria Architects Kraków Poland. www.imbasymetria.pl Tel: +48 12 398 49 00 e-mail: biuro@imbasymetria.pl Contact: Marek Borkowski

MOLA Architecture Dublin Ireland. www.molaarchitecture.com Tel: +353 1 4537 300 e-mail: rbingham@molaarchitecture.com Contact: Ralph Bingham, Michael O'Carroll

SERAU architectes et ingénieurs associés Paris France. www.serau.com Tel: +33 1 4278 1233 e-mail: ftomat@serau.com Contact: Frédéric Tomat



Greenpeace, Amsterdam Sustainability and recycling were the key drivers for renovated former industrial forge. 2,500m², delivered in 2014.



Guggenheim Museum, Helsinki, Finland competition.



L'Oréal Saint Ouen A restructuring and extension for the R&D campus, providing new services and a conference centre. Completing in September 2015.



KHV7, Copenhagen New multi-flex office headquarter for MTH in Gladsaxe, Copenhagen. Area: 12,500m².



Ernst & Young Finland A new office HQ for 450 people. GI designed all fit-out works, 5,500m², LEED Gold.



Caboto Office Complex, Corsico Total refurbishment of 12,200m² of office interiors and services, restyling of facades, redesign of parking and green spaces.

Hollandse Nieuwe
Netherlands



A bio-technical business, Amsterdam Design of an appropriate and inspiring layout for the new offices of a bio-technical business. A work environment that expresses the sustainable, innovative character of this listed company. 1,050m², delivered in 2014.



Haagse Poort/CBRE, Den Haag Development of a vision for the ground floor and conference centres in the Haagse Poort/CBRE. The solutions contribute to a successful transformation from a single tenant to a multi-tenanted situation. 1,700m², delivered in 2014.

Vopak, Rotterdam The transformation of the HQ of VOPAK into a bustling meeting centre and an inspiring open workplace. 3,000m², delivered in 2014.



IMB Asymetria Architects
Poland



Office Complex, Kraków partly completed, 40,000 GLA.

Mixed Use Development, Warsaw City Centre, 76,000 GLA.



Shopping Gallery, Pruszków 30,000 GLA.



Serau architectes et ingénieurs associés
France

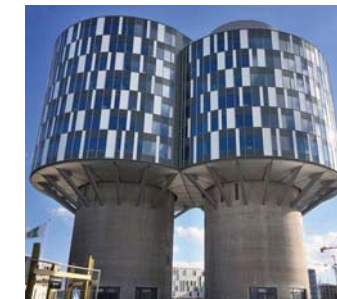


RTE Toulouse Office complex offering 9,500m² of offices and services for the French national electricity transporter.

CEA Saclay A 9,700m² building of laboratories, clean rooms and offices for the climate department of the CEA.



DesignGroup Architects
Denmark



Portland Towers, Copenhagen Harbour A landmark at the entrance to Copenhagen harbour, this office building is the first to be completed in the new development area north of Copenhagen City. It is a cantilevered structure, wrapped around two existing concrete silos and hovering 24 metres above a new urban square. There are six office floors and the top floor holds a canteen and meeting rooms. Area: 14,000m². Total height: 54m. Diameter: 20m/ 38m.

Bredgade 30, Copenhagen. Refurbishment of a historic building in the center of Copenhagen. The building houses exclusive office spaces with shared front desk, espresso bar, restaurant, etc. Area: 7,500m².



GI Design & Architecture
Finland Russia



Burger King restaurants in Finland Guidelines made it possible for the restaurant to be implemented in a unique space by the architect Eliel Saarinen's, a Jugend style Helsinki Main railway station. It has been selected the most beautiful BK in the world. GI is responsible launching all BK's in Finland.

Marks & Spencer department stores in Finland M&S has opened three refurbished stores in Finland including a 3,500m² flagship store in Helsinki. The next three will be opened 2015. GI is responsible of implementing all fit-out works.

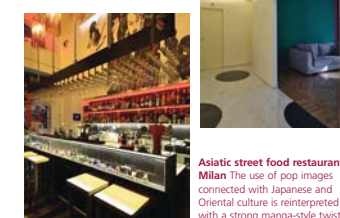


Solo Sokos Hotel Tower is a new design hotel with 320 rooms located in the heart of the city of Tampere. The building ensemble consists of a 25-storey tower (making it the tallest building in Finland). A red-tiled 19th Century locomotive hall has also been renovated alongside the new tower that houses the hotel restaurant, conference facilities and lobby. GI was responsible of creating the concept and designing the fit-out works (23,000m²).



AMA Albera Monti & Associati
Italy Switzerland

R. Apartment, Milan Bold geometries and colours inspired by optical art for a young lady's residence.



Asiatic street food restaurant, Milan The use of pop images connected with Japanese and Oriental culture is reinterpreted with a strong manga-style twist.



Ashurst international law firm, Milan Part of the renovation of a early 1950's building. The interior's dynamic lines, bright colours and transparent planes contrasts with the darkish carpet, the black lined corridor ceilings and the tribal-art sculptures that decorate most of the office space.



Vegetarian restaurant, Cagliari All natural and local materials and finishes have a strong connection with to a food concept based on rigor, simplicity and naturalness in the choice of ingredients.