



# European Architects' Alliance

Interiors





## European Architects' Alliance

The European Architects' Alliance is a consortium of architectural and design firms with over 30 offices and 750 staff in Europe and America. Founded on the principle of mutually beneficial cooperation, our network of offices provides architectural and design services for clients whose requirements transcend national boundaries, and in particular multi-national firms pursuing global roll-out development programs. The EAA's mission integrates the benefits of international experience and expertise with local insight and project management across a wide range of sectors.

Our priorities are:

- Understanding the client
- Sharing knowledge
- Continuous improvement
- Best-value targets
- Concurrent design
- Non-adversarial contracts
- Increased client confidence

Alliance members, well established in their home venues and complementary to one another, bring an extraordinary breadth of knowledge, skill and creative energy to projects throughout Europe and the Middle East. The EAA's reach is further extended by ties to practices in Africa, North and South America, and the Pacific Rim.

## EAA Interiors

Internationally recognized for its architectural achievements, the EAA's work in interior architecture and design is equally impressive and further strengthened through the recent addition of GMW-IA Interior Architects, representing an association between GMW Architects and IA Interior Architects, a United States firm. IA Interior Architects is the first and largest global architectural firm dedicated exclusively to interior architecture and ranks as one of the foremost firms world-wide in corporate and financial institution design. With 14 offices, 12 of which are in the US, IA has provided interior architecture and design services to corporate and multi-national clients for over twenty years in the US, Asia, Europe and South America.



EAA member locations throughout Europe

## European Architects' Alliance

### GMW Architects

PO Box 1613, 239 Kensington High Street  
London W8 6SL, **United Kingdom**  
Tel: +44 20 7937 8020 Fax: +44 20 7937 5815  
info@gmw-architects.com ■ www.gmw-architects.com  
Contact: **Lyn Edwards, Tim Hardingham**

### GMW-IA Interior Architects

239 Kensington High Street  
London W8 6SL, **United Kingdom**  
Tel: +44 20 7361 5622 Fax: +44 20 7937 5815  
b.rutkowski@interiorarchitects.com ■ www.interiorarchitects.com  
Contact: **Bill Rutkowski**  
US Contact: **David M. Bourke**, d.bourke@interiorarchitects.com  
Tel: 001 202 965 0304

### GMW Mimarlık ve Danışmanlık Ltd

Teşvikiye Caddesi No: 103/16, **Istanbul** 80200, **Turkey**  
Tel: +90 212 327 1940 Fax: +90 212 260 9100  
gmw@gmw.com.tr ■ www.gmw.com.tr  
Contact: **Ali Özveren**

### Murray Ó Laoire Architects

Fumbally Court, Fumbally Lane, **Dublin** 8, **Ireland**  
Tel: +353 1 453 7300 Fax: +353 1 453 4062  
Calbhac.ocarroll@murrayolaoire.com ■ www.murrayolaoire.com  
Contact: **Calbhac O'Carroll; Sean Ó Laoire; Michael O'Carroll**

### Murray Ó Laoire Architects

Merriman House, Merriman Place  
Lock Quay, **Limerick, Ireland**  
Tel: +353 61 316 400 Fax: +353 61 316 853  
mail@limerick.murrayolaoire.com  
Contact: **Hugh Murray; Nick Butler**

### Murray Ó Laoire Architects

Kozhevnikeskaya 10/2, 113114 **Moscow, Russia**  
Tel: +7 502 937 3757 Fax: +7 502 937 3760  
calbhac.ocarroll@murrayolaoire.com  
Contact: **Calbhac O'Carroll**

### KLMF Architects

Plateia theatrou 14, 105 - 52, **Athens, Greece**  
Tel: +30 1 210 3211139 Fax: +30 1 210 3211155  
klabr@tee.gr ■ www.klmfarchitects.gr  
Contact: **Konstantinos Labrinopulos**

### CERAU s.p.r.l.

Avenues de Courses n° 20 bte 15, 1050 **Bruxelles, Belgique**  
Tel: +32 2 673 60 72 Fax: +32 2 673 01 46  
bgerard@cerau.be ■ www.cerau.com  
Contact: **Louis Millis**

### DesignGroup Architects

Gronnegade 10 3, DK1107 **Kobenhavn K**  
**Copenhagen, Denmark**  
Tel: +45 33 91 84 85 Fax: +45 33 91 84 87  
designgroup@image.dk ■ www.dga.dk  
Contacts: **Morten Jørgensen; Christian Giese**

### AMA Albera Monti & Associati

via Meravigli, 14 **Milano, Italy**  
Tel: +39 02 8699 6670-6574  
info@alberaemonti-assoc.com ■ www.alberaemonti-assoc.com  
Contact: **Nicolas Monti**

### AMA Albera Monti & Associati

piazza Cavour, 19 **Roma, Italy**  
Tel: +39 06 322 0741  
fazzi.rom@alberaemonti-assoc.com ■ www.alberaemonti-assoc.com  
Contact: **Sandro Fazzi**

### AMA Albera Monti & Associati

via Canneto Lungo, 27/9 **Genova, Italy**  
Tel: +39 010 246 8593  
serra.gen@alberaemonti-assoc.com ■ www.alberaemonti-assoc.com  
Contact: **Emma Serra**

### AMA Albera Monti & Associati

via Bonacorsa, 5 **Modena, Italy**  
Tel: +39 059 23 93 21  
p.morandi@alberaemonti-assoc.com ■ www.alberaemonti-assoc.com  
Contact: **Pietro Morandi**

### AMA Albera Monti & Associati

via Salinas, 68 **Palermo, Italy**  
Tel: +39 091 344 631  
sbacchi.pal@alberaemonti-assoc.com ■ www.alberaemonti-assoc.com  
Contact: **Sbacchi Michele**

### IMB Asymetria Atelier

ul.Berka Joselewicza 21 C, 31-051 **Kraków, Poland**  
Tel: +48 12 428 08 10 Fax: +48 12 422 68 27  
imb@fema.kraków.pl ■ www.imb.pl  
Contact: **Marek Borkowski**

### IMB Asymetria Atelier

ul.Zurawia 2/25, 00-503 **Warsaw, Poland**  
Tel: +48 22 628 01 35 FAX: +48 22 625 44 22  
ami@supermedia.pl ■ www.imb.pl  
Contact: **Marek Borkowski**

### FM Arquitectos

Principe de Vergara, 39 3º, 28001 **Madrid, Spain**  
Tel: +34 91 577 0664  
jgd@fmarquitectos.com  
Contact: **James Drummond**

### SERAU architects et ingénieurs associés

92 Rue Saint Martin, 75004 **Paris, France**  
Tel: +331 4278 1233 Fax: +331 4278 2640  
cremy@serau.com ■ www.serau.com  
Contact: **Christophe Rémy**

### Tomislav Cop Architects

Trg Bana, Josipa Jelacica 6, **Zagreb** 10000, **Croatia**  
Tel: +385 1 488 3900 FAX: +385 1 488 3901  
tomislavcop@tomislavcop.com  
Contact: **Tomislav Cop**

### Collignonfischötter Architekten

Wielandstr 17, 10629 **Berlin, Germany**  
Tel: +49 30 31 51 81-0 Fax: +49 30 31 51 81-10  
o.collignon@cf-a.com ■ www.cf-a.com  
Contact: **Oliver Collignon**



Imagine & Evolution, London

GMW Architects

■ London



Ansbacher Bank Headquarters, London



KPMG, Milton, Keynes



British American Tobacco Headquarters, London



British Gas Headquarters, London



TD Waterhouse, London

GMW-IA Interior Architects

■ London



Atatürk Airport, International Terminal, Istanbul

GMW Mimarlık

■ Istanbul



Cerruti Hotel, Istanbul



Cerruti Hotel, Istanbul



Mellon Bank, Dublin



Adidas Olymp, Moscow



Microsoft European Operations Centre, Dublin

Murray Ó Laoire Architects

■ Dublin ■ Limerick ■ Moscow



Cleverbank, Athens

KLMF architects  
■ Athens



talk&drink café-bar, Athens



f-zien Company, Athens



C.E.I. Construct S.A., Brussels



Plaine 5, Brussels



IMMO 167, Waterloo

Cerau s.p.r.l.  
■ Brussels



EMI Headquarters, Copenhagen



Group 4 Falck, Copenhagen



HUR 1 IA, Copenhagen



Steer Davies Gleave, Bologna



Toffoletto & Associati, Milano



Danske Bank, Copenhagen



Provincia di Milano, Milano



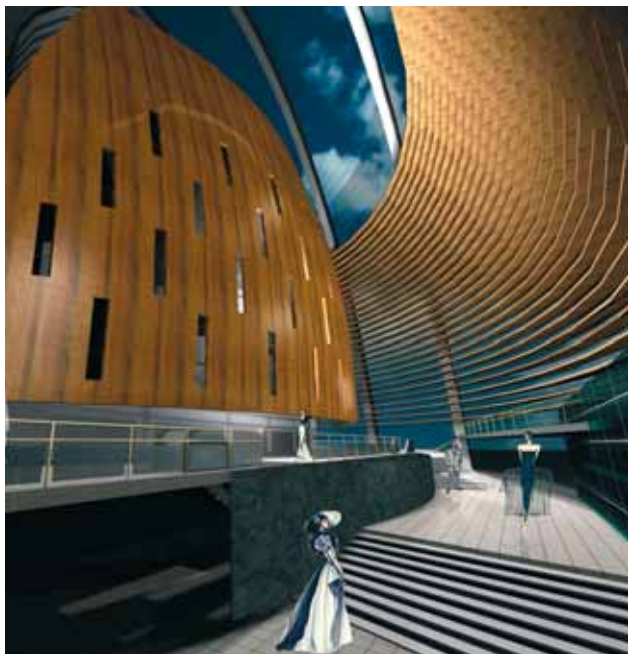
Comune di Milano, Milano

DesignGroup Architects

■ Copenhagen

AMA Albera Monti & Associati

■ Milano ■ Roma ■ Genova ■ Modena ■ Palermo



National Opera Competition, Oslo

IMB Asymetria Atelier

■ Kraków ■ Warsaw



Cafe, Galeria Kazimierz, Kraków



Care Vision Clinic, Kraków



Bea Systems, Parque Norte, Madrid



DuPont, Tamón Valley, Asturias



Polaris World, Amsterdam

FM Arquitectos

■ Madrid





Lehman Brothers, Paris

Serau  
■ Paris



Thales University, Paris



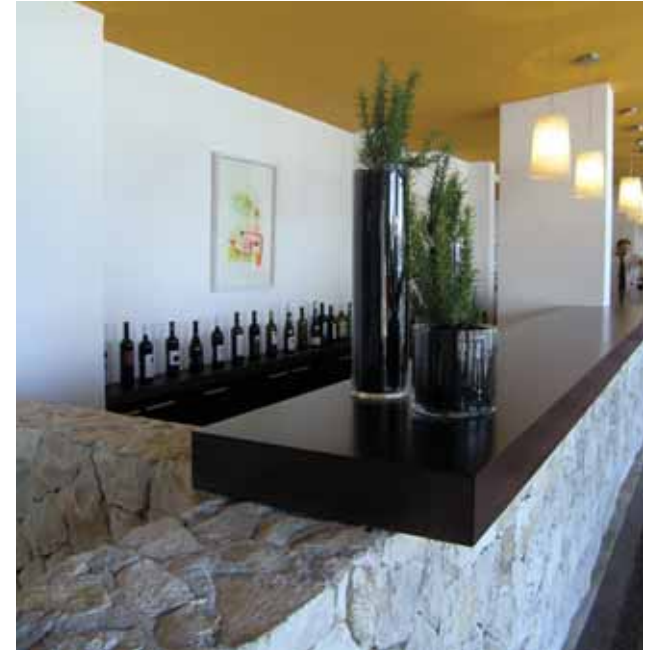
Thales University, Paris



Hotel Ilirija, Biograd, Croatia



Lavender, Biograd, Croatia



Hotel Ilirija, Biograd, Croatia

Tomislav Cop Architects  
■ Croatia



Underground Station, Berlin City Hall



Vegla/Saint-Grobian Glass - Custom Table/Detail, Berlin



Vegla/Saint-Grobian Glass , Berlin

Collignonfischötter Architekten  
■ Berlin

*The European Architects' Alliance — international experience and expertise, local insight and project management for architectural and design projects across Europe, the Middle East and beyond.*

[www.eaa-eu.com](http://www.eaa-eu.com)